



## Flexible textile solutions for padel halls

Play in comfort - whatever the weather



# Built for Padel

Designed for Performance. Built for Flexibility.

Padel is growing fast and so are the expectations for high-quality, flexible and cost-efficient indoor facilities. With Tectura® textile systems, you can create padel halls that adapt to weather conditions, maximise playing time and offer an outstanding player experience. Our textile solutions provide effective protection against sunlight and UV radiation, preventing glare and ensuring optimal playing conditions.

Tectura textile solutions enable the efficient construction and operation of modern padel halls. Compared to conventional building methods, lightweight textile systems reduce structural requirements, shorten construction time and offer maximum flexibility for future adaptations. Large openings can be easily enclosed while still allowing natural ventilation and daylight – creating the perfect balance between indoor comfort and outdoor experience.



 **Tectura® - Textile Solutions for Industrial Hall Construction** >>  
 Follow us for more project insights and innovations



## Why Tectura for Padel?

-  Play all year round regardless of weather
-  Fast opening and closing systems for optimised indoor climate
-  Natural ventilation through textile structures
-  Full weather protection enables year-round court usage and maximises booking potential
-  Lightweight design with no heavy substructure required
-  Fast and simple installation and a future-proof investment
-  Facade can be used as an attractive advertising space
-  Easy expansion or modification

# Our Padel Solutions

## Tectura Textile Facade



### The breathable building envelope

Textile facades are custom-made to individual specifications and are the ideal solution for enclosing large hall sides while maintaining airflow and daylight. They provide reliable weather protection and privacy, while creating a bright and comfortable playing environment. In addition, the textile surfaces can be individually printed, offering valuable branding and advertising space for sponsors, partners or operators.

### Benefits for padel halls:

- Natural ventilation for better playing conditions
- Daylight use reduces energy costs
- Custom-made to fit any hall geometry
- Flexible adaptation for future expansions
- Cost-efficient façade solution
- Perfect for side walls and large facade areas

## Tectura Folding Front



### Maximum openness – whenever you need it

The folding front allows large openings up to 20 m wide and 10 m high, enabling entire hall sides to open within seconds. This creates a unique playing experience while maintaining full weather protection when closed.

### Benefits for padel halls:

- Fast opening for flexible use
- High wind resistance for safe operation
- Ideal for daily opening and closing
- Durable and low-maintenance design
- No downtime in case of damage
- Full weather protection
- Open-air feeling when desired
- Maximum flexibility for operators
- Perfect for front sides, entrances and event openings

## Proven in Practice

Tectura solutions are already successfully used in sports and industrial applications where flexibility, durability and climate control are essential.



### Building Information Modeling

Scan now and go directly to our **BIM portal** to plan your next padel project with textile solutions from Tectura!



**Let's build your next padel hall together.**  
 Efficient. Flexible. Future-proof.



# References



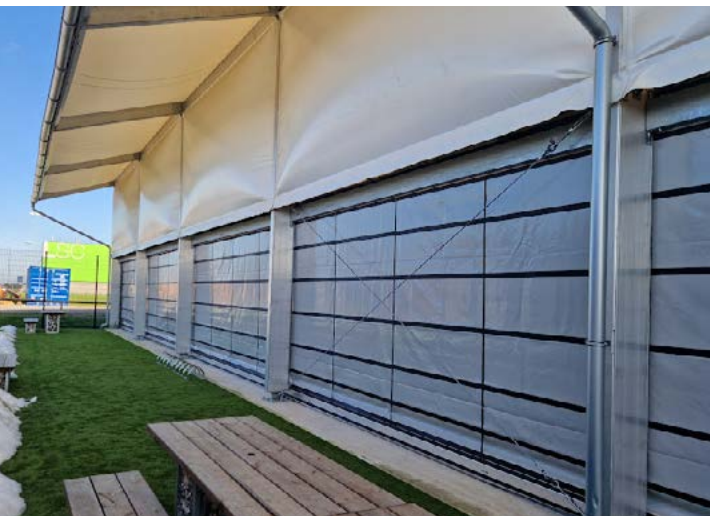
## Padel Hall Valencia (Valencia, ES)

Textile facade solution for optimised ventilation and weather protection.



## Sports Hall (Ihlow, DE)

Folding fronts can be opened for all-weather training.



## Padel Hall (Bristol, UK)

Your padel session – rain or shine, yet still with that outdoor feel thanks to the folding front.



## Padel Hall (Bracknell, UK)

Operational flexibility due to opening option of the folding front.



Tectura® is s registered trademarks of HUESKER Synthetic GmbH.  
HUESKER Synthetic is certified to ISO 9001, ISO 14001 and ISO 50001.



### HUESKER Synthetic GmbH

Fabrikstrasse 13-15  
48712 Gescher, Germany  
Phone: + 49 (0) 25 42 / 701 - 0  
Fax: + 49 (0) 25 42 / 701 - 499  
E-mail: [techtex@HUESKER.de](mailto:techtex@HUESKER.de)  
Web: [www.HUESKER.com](http://www.HUESKER.com)

Location Duellen  
Im Broemken 5  
48249 Duellen, Germany  
Phone: + 49 (0) 25 94 / 89 27 - 0  
Fax: + 49 (0) 25 94 / 89 27 - 890  
E-mail: [techtex@HUESKER.de](mailto:techtex@HUESKER.de)

**# HUESKER**  
Ideen. Ingenieure. Innovationen.